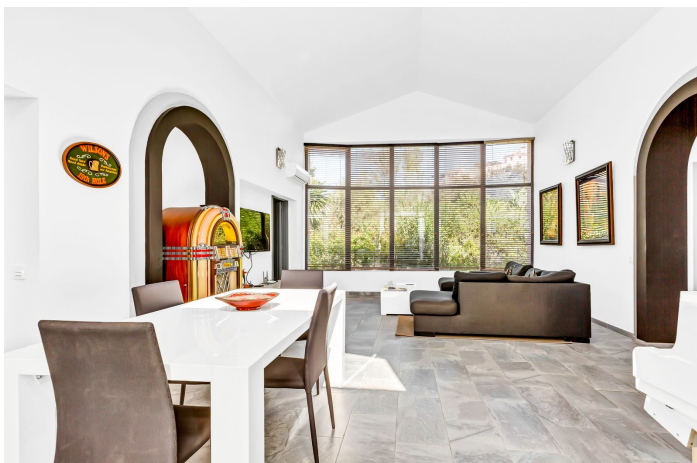




Detached Villa for sale in Elviria, Marbella

599,000 €

Reference: R5253490 Bedrooms: 3 Bathrooms: 2 Build Size: 96m² Terrace: 20m²





Costa del Sol, Elviria

FABULOUS OPPORTUNITY

Modern Elegance near Marbella!

Three-Bedroom Villa in El Manantial, Santa Maria Golf, Elviria

This villa combines modern comfort with a prime location – perfect for those who appreciate the best of Mediterranean living.

Discover this charming detached villa in Elviria, just 15 minutes from the vibrant centre of Marbella. The villa is ideally located, just a short walk from the exclusive Santa Maria Golf Club and within easy reach of Elviria Beach with its boutiques, restaurants, and bars. El campo de golf Santa María de 18 hoyos, con casa club, restaurante y cancha de tenis, está a la vuelta de la esquina.

Refurbished to high standards, the villa features a bright living/dining area with a stunning cathedral ceiling and a spacious, fully fitted Schmidt kitchen.

The master bedroom with an en-suite bathroom, two additional bedrooms sharing a bathroom ensure comfort and space.

Additional features include preinstalled air conditioning (heating and cooling) and an alarm system.

The complex boasts four communal pools, beautifully maintained gardens, and private parking. All amenities, including restaurants, supermarkets, and banks, are just minutes away.

Location Overview:

- On Foot: Beach, golf club, shops, restaurants
- By Car:
- Marbella Centre: 15 minutes
- Puerto Banús: 20 minutes
- Malaga Airport: 35 minutes
- Fuengirola Centre: 15 minutes
- Beach: 5 minutes

Features in Detail:

- Location: Close to golf, sea, and shops, in an urbanised area
- Orientation: South/Southwest
- Condition: Modern and well-maintained
- Pool: Four Communal pools
- Climate Control: Air conditioning (heating and cooling)
- Views: Garden
- Special Features: Terrace, fitted wardrobes
- Furnishing: Part furnished
- Parking: Private, multiple spaces on the street
- Style: Contemporary



IBI Fees: €650/year - Community Fees: €170/month

Please contact us for more information.



Features:

Features

Private Terrace
Ensuite Bathroom
Fitted Wardrobes

Views

Garden

Orientation

South West

Climate Control

Air Conditioning

Cold A/C

Hot A/C

Condition

Good

Setting

Close To Golf

Urbanisation

Close To Sea

Close To Shops

Close To Schools

Close To Forest

Furniture

Part Furnished

Kitchen

Fully Fitted

Pool

Communal

Children`s Pool

Garden

Communal

Private

Landscaped

Utilities

Electricity

Security

24 Hour Security

Parking

Private

Street

More Than One

Energy Rating

D

Category

Investment

Bargain

Resale

Contemporary

CO2 Emission Rating

D