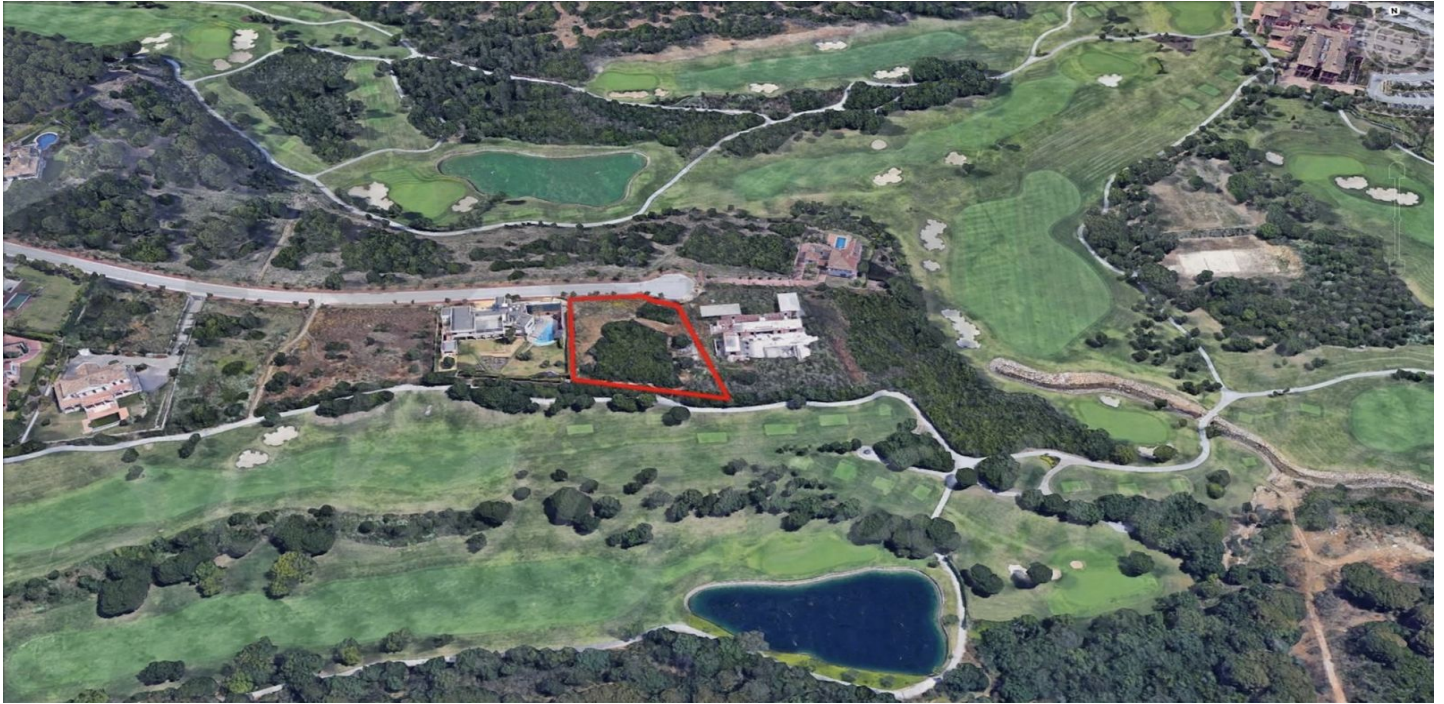




Land for sale in Sotogrande, Sotogrande

1,075,000 €

Reference: R5133670 Plot Size: 4,146m²





Costa de la Luz, Sotogrande

This expansive plot is situated within the prestigious enclave of La Reserva de Sotogrande, surrounded by endless rolling green hills and some of the most renowned golf courses on the coast. With an enviable southerly orientation, this frontline golf position offers uninterrupted 180° views over the Mediterranean Sea, the manicured fairways, and the distant mountain ranges, creating a truly breathtaking backdrop. Covering 4,146 m² with a generous buildable area of 2,777 m², the plot presents an exceptional opportunity for discerning buyers to create a magnificent residence in the heart of this exclusive nature reserve. Its size and location allow for a property that blends striking architecture with the surrounding natural beauty, offering both privacy and prestige. The location is perfectly positioned just 2 km from the highly regarded Sotogrande International School, 10 km from the port of Sotogrande, and 12 km from stretches of unspoiled sandy beaches. Its proximity to world-class golf courses, including Almenara Golf and Valderrama Golf, along with its privileged frontline golf position at La Reserva Sotogrande Golf Club, makes it an unparalleled choice for golf enthusiasts and lovers of refined living alike. This is, without doubt, a golden opportunity to secure a prime plot in one of the most sought-after destinations in southern Spain, offering the chance to build a dream home in an equally dreamy location. * taxes not included



Features:

Orientation

South

Views

Sea

Mountain

Panoramic

Country

Golf

Setting

Close To Golf

Close To Sea

Close To Shops

Close To Town

Close To Schools

Frontline Golf

Category

Golf

Luxury